

JY-HM360 How to update the firmware

NOTE

- (1) Attach both AC Adapter and Battery when updating.
- (2) Disconnect/Remove USB cable, Video cables (HDMI, SDI, A/V, etc), other cables except AC Adapter.
- (3) Do NOT power off during updating
- (4) It takes about 3 minutes for updating
- (5) After Firmware update, please go to System Menu and proceed a system reset.
This operation will be necessary for a proper update of your camcorder.

Preparation (Copying firmware to SD/SDHC memory card)

NOTE: Do NOT use SDHC memory card for recording. In case of using SDHC memory card, Format it with Camera.

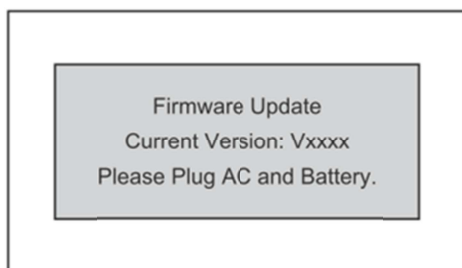
- (1) Download the target file onto your PC from the download site and unzip it. (Double click it since it's a self extract file)
- (2) Insert the SD/SDHC memory card into your PC (or card reader) and confirm No file exists in the card. If files exist.
- (3) Copy the unzipped files onto the SD/SDHC memory card, and confirm the directory in the card as follows;

In case of JY-HM360, ~~¥PRIVATE¥JVC¥~~JY-HM360

How to update

- (1) Make sure that the POWER switch is OFF, and then whileholding down the [FOCUS LOCK] and [MENU/THUMB(side)] buttons, turn ON the power. The current firmware version is displayed on the LCD.

LCD screen

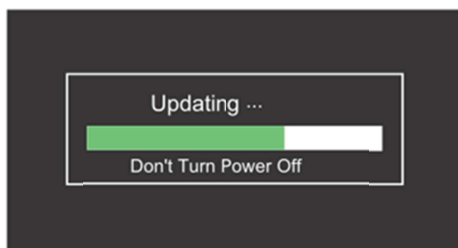


- (2) Insert the SD/SDHC memory card into the card slot B. (Can not be updated with slot A.)

- (3) Update starts automatically, after the SD/SDHC memory card was inserted.

- A progress bar is displayed on the LCD during update.
- SLOT A LED goes out and SLOT B LED carries out red blink irregularly.

LCD screen



- (4) After update is completed, "Complete" is displayed on the LCD. (Update time is about 7 minutes.) SLOT A LED and SLOT B LED carry out green blink simultaneously slowly.

LCD screen



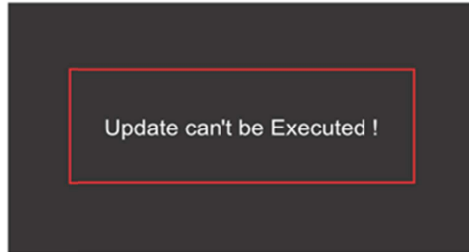
(5) Remove the SD/SDHC memory card.

(6) Update is ended. Remove an AC adaptor and a battery. Turn OFF the power and turn it ON again.

When update cannot be performed

When update cannot be performed for some reason, "Update can't be Executed !" is displayed on the LCD. SLOT A LED and SLOT B LED blink by turns.

LCD screen

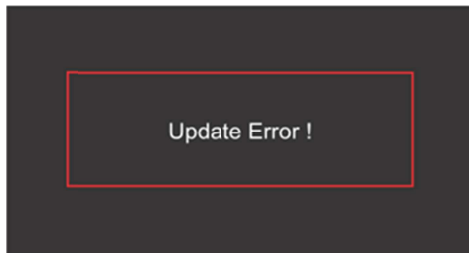


In this case, check whether an update file is a thing of an applicable model.

Update error

When update cannot be performed for some reason "Update Error !" is displayed on the LCD. SLOT A LED and SLOT B LED blink by turns.

LCD screen



In this case, there is possibility of failure of apparatus.